



Contact Us

Purdue Research Park of Indianapolis
Purdue Technology Center
5225 Exploration Drive
Indianapolis, IN 46241
(317) 614-0790 (phone)
(317) 856-9834 (fax)
www.purdue-research-park.com/indianapolis

Visit Us

From downtown Indianapolis:

- Travel south on Capitol Avenue. Merge onto I-70 West and travel approximately 8.5 miles.
- Take Exit 68 toward Airport Expressway/AmeriPlex Parkway/Ronald Reagan Parkway.
- Take the AmeriPlex Parkway exit.
- Continue on AmeriPlex Parkway South.
- Turn left onto Exploration Drive and drive about three-quarters of a mile to 5225 Exploration Drive.

From the north side of Indianapolis:

- Follow I-465 West to I-465 South (toward the Indianapolis International Airport).
- Merge onto I-70 West, Exit 9B.
- Follow the signs for Airport Expressway/AmeriPlex Parkway/Ronald Reagan Parkway.
- Take the AmeriPlex Parkway exit.
- **NOTE: Do not continue onto I-70 West.**
- Continue on AmeriPlex Parkway South.
- Turn left onto Exploration Drive and drive about three-quarters of a mile to 5225 Exploration Drive.

From the south side of Indianapolis:

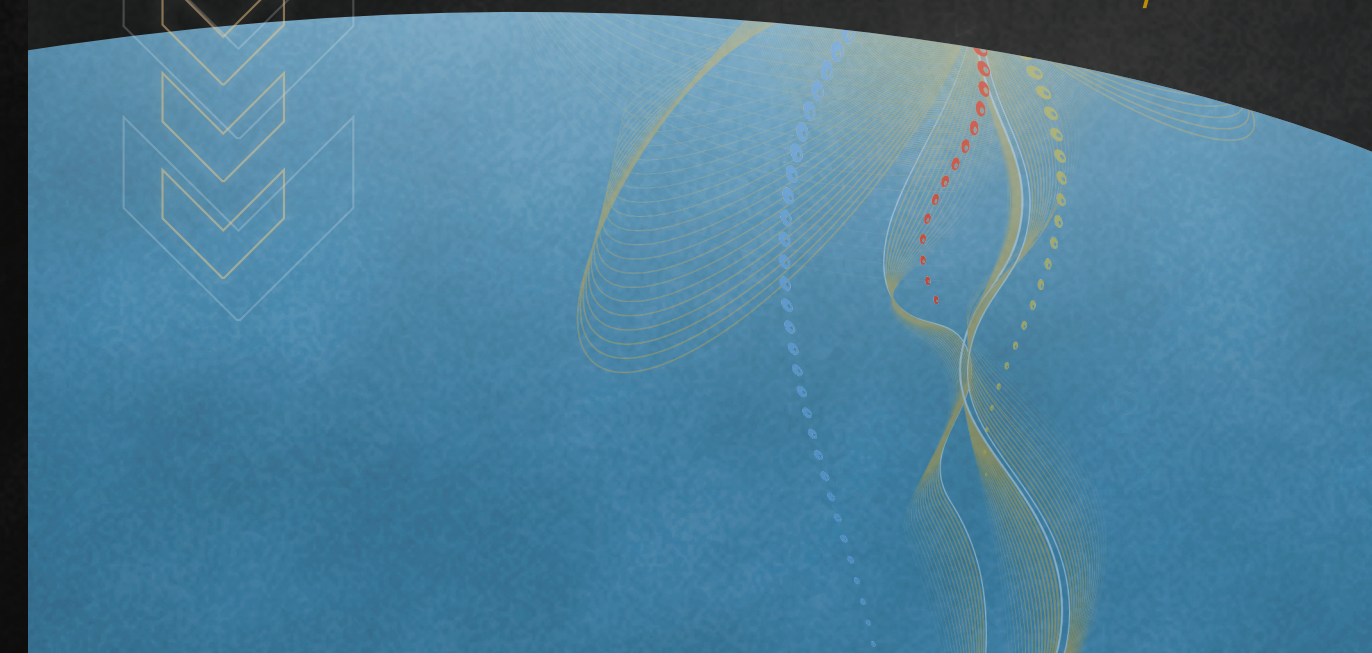
- Take I-65 North to I-465 West.
- Follow I-465 West to I-70 West, Exit 9B (toward the Indianapolis International Airport).
- Follow the signs for Airport Expressway/AmeriPlex Parkway/Ronald Reagan Parkway. Take the AmeriPlex Parkway exit.
- **NOTE: Do not continue onto I-70 West.**
- Continue on AmeriPlex Parkway South.
- Turn left onto Exploration Drive and drive about three-quarters of a mile to 5225 Exploration Drive.

PURDUE
RESEARCH PARK

The idea economy is here®



Purdue Research Park
Purdue Technology Center
Indianapolis



Purdue Research Park of Indianapolis

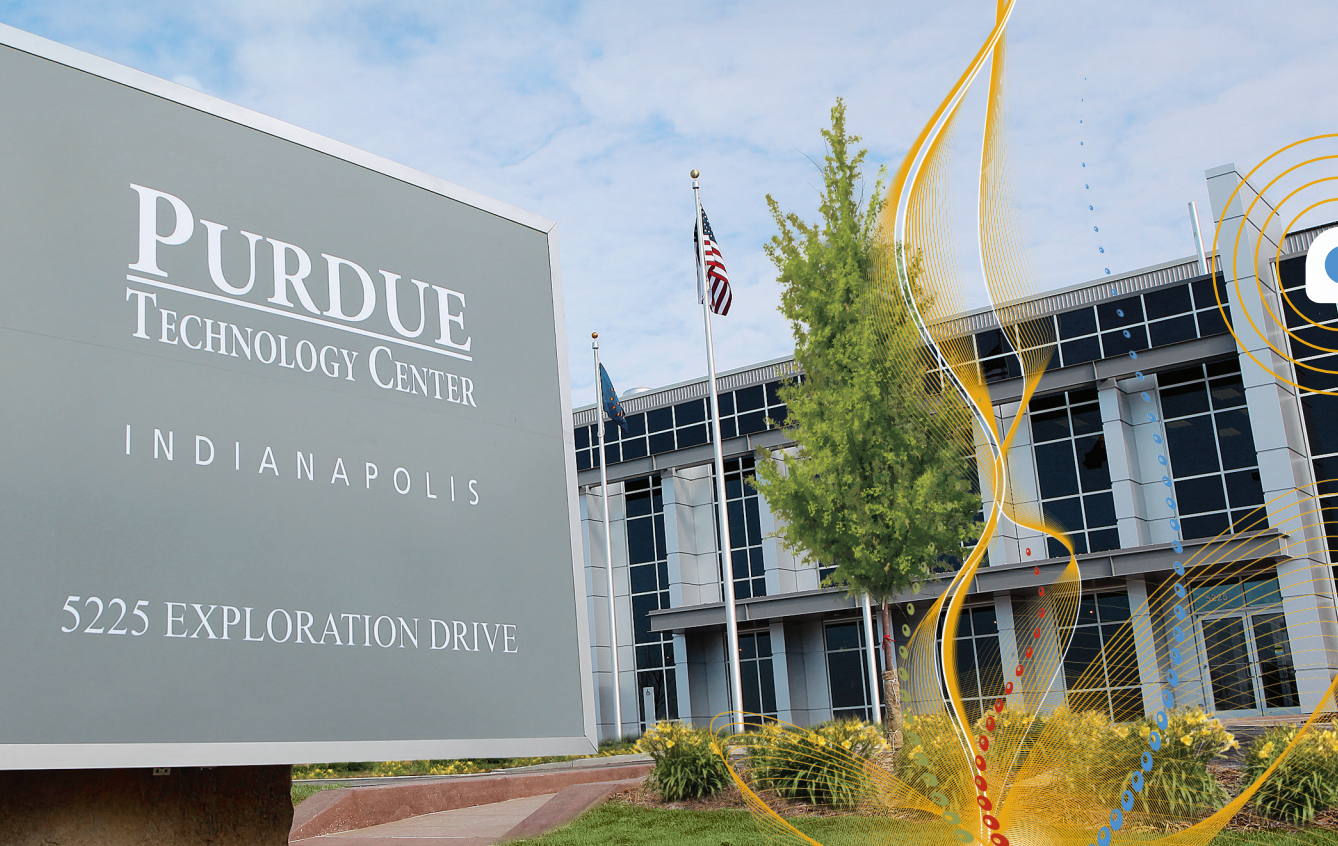
Purdue Technology Center

The Purdue Research Park of Indianapolis brings the value of Purdue Research Park's internationally award-winning technology incubation program to Indiana's capital city.

Strategically located on the city's southwest side near the Indianapolis International Airport, the flagship business accelerator at Purdue Research Park of Indianapolis combines a state-of-the-art office facility with resources and services proven to move emerging technology companies forward. An influx of innovation creates a thriving entrepreneurial community operating in the information technology, life sciences, advanced manufacturing, logistics and green technology arenas.

At the "Crossroads of America," Central Indiana reports employment within the fast-growing logistics arena far above the national average. Indianapolis has the second highest concentration of biopharmaceutical jobs, ranks among the top ten life sciences metros and is among the top four largest life sciences economies.

With Indiana University-Purdue University at Indianapolis (IUPUI) and the Indiana University Medical Center nearby, and Purdue University's technology transfer expertise on call, Purdue Research Park of Indianapolis appeals to both the scientific and corporate mindset.



Facility

Our state-of-the-art facility provides high-tech advantages to give our companies a competitive edge:

- Flexible space and leases as short as six months
- Well-appointed conference facilities with videoconferencing/presentation equipment
- Fiber optic network connectivity
- Data center with backup-generated power, industry-standard cooling and round-the-clock security monitoring
- Managed business center with quality equipment
- VoIP telecommunications system
- Secure facilities with key fob entry
- Specialized laboratory facilities
- Exterior and interior suite identification and signage
- Break room with microwave oven and refrigerator
- Plentiful free parking



Services

We offer our clients several business incubation services, which are especially helpful early in the entrepreneurial process:

- Business accelerator services through Purdue Foundry
- Shared office services including professional receptionist/clerical support
- Meeting and conference management assistance
- Basic utilities and janitorial services
- Media relations and marketing assistance
- HR recruitment services
- Managed mail services
- IT support



Resources

We provide strategic networking opportunities that bring our clients together with important resources, many of which are not available to the general public. The resources are provided by:

- Purdue Office of Technology Commercialization
- Purdue Foundry
- Anvil
- Purdue University Technical Assistance Program
- Purdue University faculty and staff for R&D collaboration
- Interns from Indiana University-Purdue University Indianapolis (IUPUI) and Purdue University's main campus in West Lafayette
- Purdue University library system
- Industry partners
- Community business and economic development partners
- Purdue Research Foundation DataStation



Purdue Foundry

The Purdue Foundry is an entrepreneurship and commercialization hub in Discovery Park's Burton D. Morgan Center for Entrepreneurship whose professionals help Purdue or Purdue-affiliated entrepreneurs create startups. Entrepreneurial professionals in the Foundry have a combined total of 150 years of entrepreneurial experience. These entrepreneurs-in-residence can provide startup guidance on a number of startup and business development ventures, including:

1. Business planning development and assistance.
2. Funding and commercialization activity.
3. Networking and pitching opportunities.
4. Ideation to refine ideas and potential markets.

The Purdue Foundry received the 2014 Incubator Network of the Year from the National Business Incubation Association for its work in entrepreneurship. For more information, contact the Purdue Foundry at founndry@prf.org.

Affiliate Program

The Purdue Research Park of Indianapolis Affiliate Program gives eligible companies access to the park's resources, facilities and specialty services. Many of our affiliate companies are waiting for available incubation space.

Financial Assistance

The Purdue Research Park staff assists clients by helping them locate sources of funding and by preparing clients to make their "ask." We help match our client companies to the appropriate financial resources, including federal grants and R&D project funding (i.e., SBIR and STTR grants), state funding and other public programs, university and corporate foundations, equity sources and early-stage gap funds. Additionally, client companies may be listed with the P3Alliance (www.P3Alliance.com) – Purdue's Angel investment network.