

CENTURY 21 GLOBAL MOBILITY

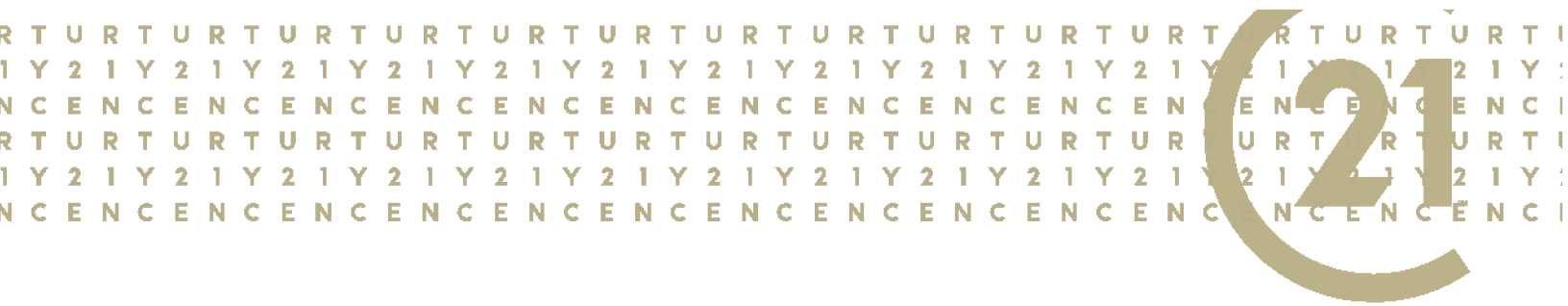
RELOCATION SERVICES GUIDE

CENTURY 21[®]

Global Mobility

1.800.634.6099

info@c21globalmobility.com



OVERVIEW

CENTURY 21 Global Mobility commitment to professional excellence and individual services is the cornerstone of our business. Our Relocation Services Division includes a management staff with over 25 years experience and expertise assisting corporate relocation. We offer a diversity of services to our corporate clients and their employees that are unsurpassed. CENTURY 21 Global Mobility is pleased to present a program to meet your specific goals. This initial proposal has been created to address your primary needs and concerns with regards to outsourcing employee relocation.

THE FOLLOWING ARE OBJECTIVES OF OUR PROGRAM

- *Recruiting Enhancement and Employee Satisfaction*
- *Simple Process Aligned with Corporate Budget*
- *Provide a Single Point of Contact*
- *Reduce Administrative Burden*

Our mission is to provide the highest quality, innovative relocation program to service the mobility needs of corporate transferees. Our goal is to exceed each transferee's unique needs and expectations which will result in each transferee experiencing a smooth, enjoyable and rewarding move.

For more information or questions, please contact:

Annie Hamilton, CRP
Vice President, Relocation Services
O: 317.814.5247 C: 317-223-9777
annie@c21globalmobility.com

Olivia Zerr, CRP
Relocation Coordinator
O: 317.814.5562 C: 317-937-2112
olivia@c21globalmobility.com

Annie Hamilton, CRP

Kristy Reilly, CRP

Olivia Zerr, CRP

Jennifer Oldham

Nancy Dillon, SPHR, SHRM-SCP



**Nancy Dillon,
SPHR, SHRM-SCP**

DESTINATION RELOCATION SERVICES

Relocation can be an overwhelming experience for a transferee. Our Relocation Department will ease the burdens by counseling the employee through the entire process.

We provide the most extensive customized relocation information to every potential transferee/new hire. The packet is designed to educate the transferee on the city they are relocating to and includes information on city facts, communities, school systems, art, entertainment, sports, housing costs, apartments and much more. This also includes an employer customized resource website.

Finding information on schools and daycare facilities can be a major concern for transferees. We provide the employee and their family with extensive information on the various schools systems and daycares and arrange on-site visits when requested.

Cost of living reports are customized to provide crucial facts to recruiters, hiring Managers and transferees on the differences in the cost of living in the departure and destination cities.

Area orientation tours are designed to provide the employee and family with a positive understanding of the various communities, schools, city attractions and other areas of specific interest to the transferee. This is an outstanding service to provide to that potential new hire or transferee that is unfamiliar with the area.

A crucial part of the relocation process is providing your employee with assistance in the purchase of the right home. After a needs assessment is completed with the employee, a highly experienced real estate agent is selected to assist the employee and their family.

Rental Assistance

Temporary Housing

Mortgage and Closing Assistance

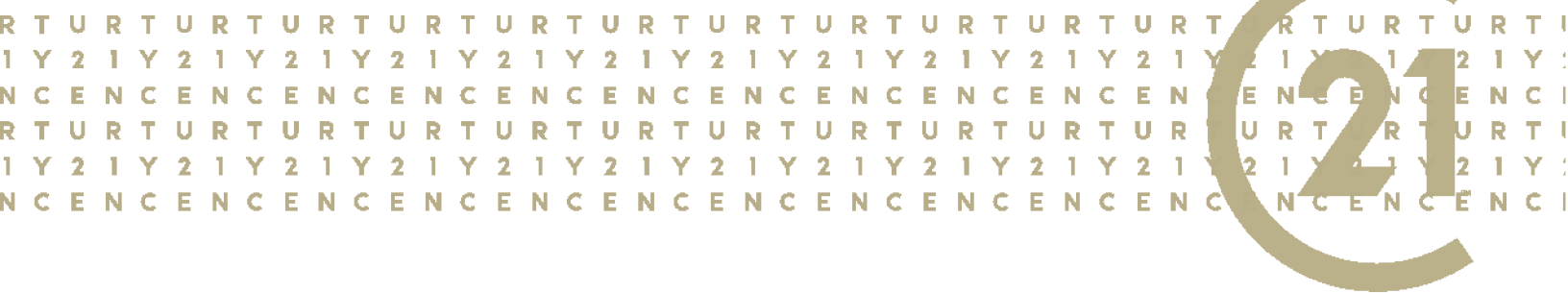
HOME SALES ASSISTANCE

Marketing Assistance

BVO–Buyer Value Option

Guaranteed Purchase Offer (GPO)

When an employer wants to take away the burden of home sale from their transferring employee, a home sale program is implemented and administered to control cost for the employer. With our partner, American Escrow and Closing, we handle the appraisal process, offer to employee and resale of the transferee's home.



EMPLOYEE REAL ESTATE BENEFIT PROGRAM

We are pleased to introduce you to an exciting New Employee Benefit Program. If you are planning a move, whether it is across town, to a new community, or a move out of state, **CENTURY 21 Global Mobility** is pleased to be the relocation specialist that is here to assist you and your family during your transition!

CENTURY 21 Global Mobility has been servicing buyers and sellers nationally for 40 years, therefore gaining insight to the well-established neighborhoods, growing new developments, school systems, retail and shopping areas, along with arts and entertainment. We specialize in corporate, individual, and family relocations, whether it is across town or across the country!

As part of your **Employee Real Estate Benefit Program**, we will help manage your move and we will provide personalized services based on your specific needs. You will also benefit from working with one of our *top real estate agents* within our offices or network, who specialize in your area of interest.

WE CAN ASSIST YOU WITH:

- Home Sale Assistance
- Home Finding Assistance
- Rental Assistance
- New Construction Guidance
- Community Information
- Local School and Child Care Info

OUR PREFERRED PARTNERS CAN ASSIST YOU WITH:

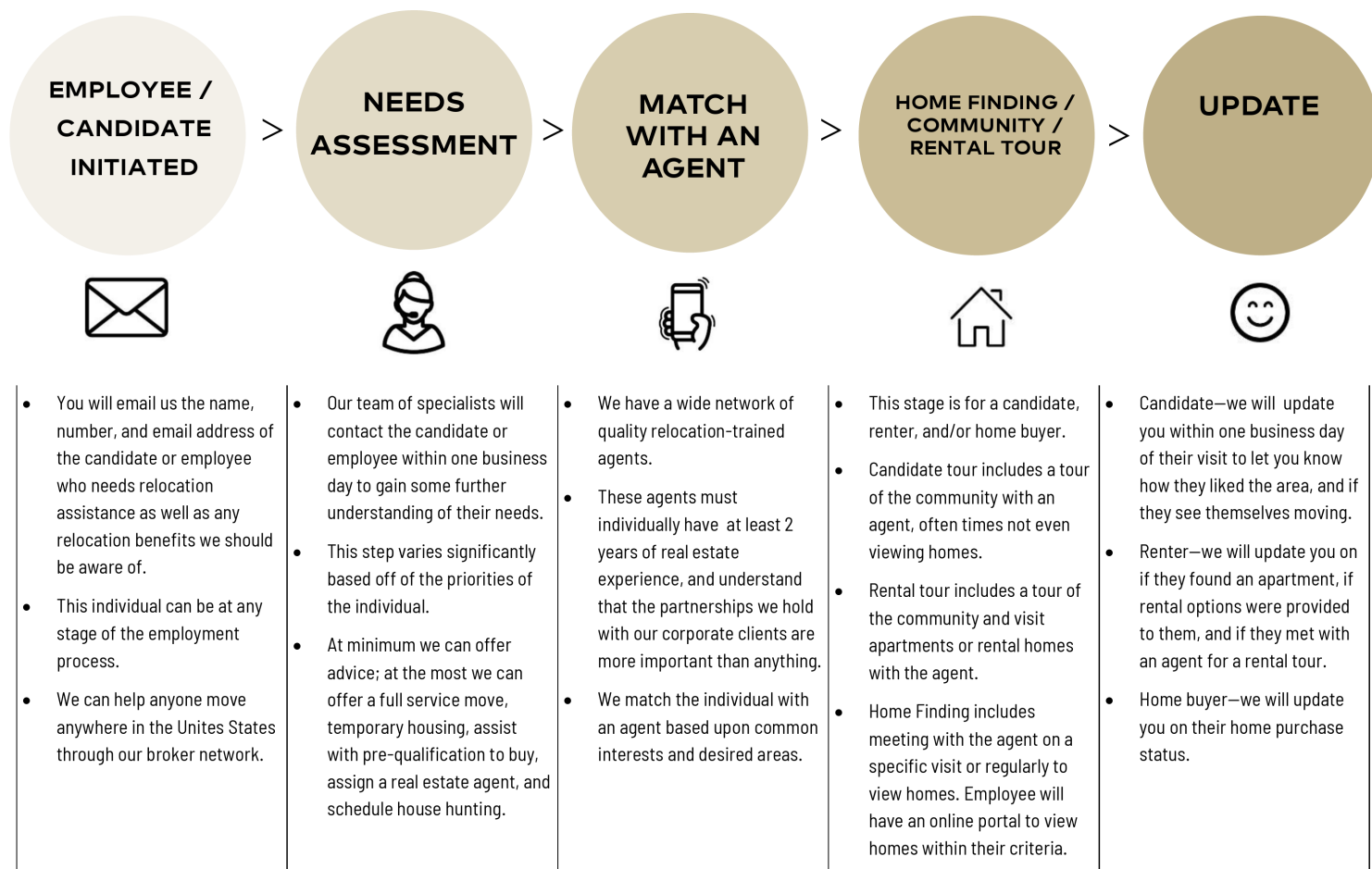
- Transportation of Household Goods
- Portable Storage Rental
- Temporary Living Coordination
- Managing Utility Connections and Setups
- Mortgage Assistance

Best Regards,

Olivia Zerr

Relocation Services Coordinator
Olivia@c21globalmobility.com
O 317-814-5562 C 317-937-2112

CORPORATE PARTNERSHIP PROVEN PROCESS



Email: info@c21globalmobility.com

Phone: 1-800-634-6099



RENTAL ASSISTANCE PROGRAMS

Relocation Benefits for All Employees

In today's competitive marketplace, attracting the best talent can be one of your biggest challenges. You work hard to ensure that your employees will truly benefit from the company's benefits package. Yet, when it comes to relocation, employees who rent vs. own are sometimes overlooked or neglected.

Did you know that in today's market, over 60% of all transferees today are renters?

Of those 60 percent, 80 percent are new hires. As part of our commitment to superior quality service to the relocation needs of corporations and their employees, we make sure that all of your employees needs are met, whether they choose to rent or own a home.

Our Relocation Specialist will contact your candidate/transferee within 24 hours of notification and assess their individual living needs and desires for a place to call home. We'll then send a custom Relocation Packet, including information on apartment communities that fit their specifications so when they arrive to look for places to live, their time is spent efficiently.

New Hire Rental Tour & Program

Living Needs Assessment

Custom Relocation Information

Community Search / School Search

Area Orientation Tour (minimum 2 hours)

Rental Property Research, Preview Appointments & Lease Negotiation

Agent "Walk-Thru" prior to move-in to ensure everything is working and property is as stated in lease

HHG & Temporary Housing Coordination

Costs may vary per market area. A proposal will be done prior to determine exact cost.

Olivia Zerr

Relocation Coordinator

Olivia@c21globalmobility.com

CANDIDATE TOURS

CENTURY 21 Global Mobility has been offering candidate tours to local Corporate Clients for 25+ years. Our Relocation Trained Real Estate Agents are extremely knowledgeable area experts. We believe everyone should #LoveWhereYouLive!

Our agents will pick your candidate up from their hotel, your office, or anywhere most convenient for the candidate. We tailor specifically to the needs of the candidate, so your length varies, however we do suggest allowing 2-4 hours for the tour in order for the candidate to get a full understanding of the areas and not feel rushed.

The candidate tours are complimentary and part of our overall partnership. We recognize that the goal is an unbiased tour of the surrounding area. Our goal is not to sell the candidate a home during the tour, but instead to showcase what it would be like to live and work in that specific location.

PREFERRED CANDIDATE INFORMATION

(If applicable)

- Candidate name
- Candidate contact information (phone number and/or email)
- Position candidate is interviewing for
- Dates of planned visit
- Location of interview
- Hotel accommodations
- Rental car accommodations

OUR PROVEN PROCESS

1. Candidate information is emailed to info@c21globalmobility.com
2. We will reach out to the candidate to do a complete needs assessment
3. We hand select a top performing relocation trained agent to connect with the candidate and schedule a tour
4. We follow up after the tour to provide any valuable feedback we receive from the candidate, including any barriers to overcome in order to relocate.



Indianapolis agent Sharon Bulmann discusses the benefits of
Candidate Tours

Link to view:

<https://www.youtube.com/watch?v=pgZBkbhG35A>



We hope to partner with you in the months and years to come, and deliver extraordinary experiences along the way!

Clickable PDF Links (Web View Only)

Visit our website at: www.c21globalmobility.com

Link to Candidate Tour Youtube Video: <https://www.youtube.com/watch?v=pgZBkbhG35A>

Follow us on LinkedIn: [@c21globalmobility](https://www.linkedin.com/company/c21globalmobility)

Follow us on Facebook: [@c21globalmobility](https://www.facebook.com/c21globalmobility)

Interested in following our Indianapolis area Instagram? Search @c21scheetzrelo on Instagram and click follow!

Annie Hamilton, CRP

VP of Relocation

annie@c21globalmobility.com

O 317-814-5247 C 317-223-9777

Kristy Reilly, CRP

Corporate Homesale Manager

kreilly@c21globalmobility.com

O 317-814-5331

Olivia Zerr, CRP

Relocation Coordinator

olivia@c21globalmobility.com

O 317-814-5562 C 317-937-2112

Jennifer Oldham

Relocation Coordinator

jennifer@c21globalmobility.com

O 317-814-2119

Nancy Dillon, SPHR, SHRM-SCP

Relocation Coordinator

nancy@c21globalmobility.com

O 317-814-5289



UNDERSTAND. SERVICE. INNOVATE.

USI Insurance Services
200 Summit Lake Drive
Suite 350
Valhalla, NY 10595
www.usi.com
Phone: 914.749.8500
Fax: 914.749.8535

November 10, 2016

To Whom It May Concern;

USI Insurance Services LLC, has had CENTURY21 Scheetz as our single source relocation partner since 2002. I have had the pleasure of working directly with the CENTURY21 Scheetz team since I joined USI in 2004. The level of service and attention that our employees receive has always been outstanding. CENTURY21 Scheetz has always provided white-glove service to every employee that we have connected with them for services. This high level of service has been a constant since I have been partnering with them.

CENTURY21 Scheetz always looks out for the employee as well as works within the relocation plans that USI Insurance Services LLC has in place, but is nimble enough to discuss with USI directly if any exception can or should be made. USI Insurance Services LLC is always apprised in a timely manner to the status of all the relocations that are in motion. The relationship with CENTURY21 Scheetz is a true partnership.

All of our experience with CENTURY21 Scheetz has been very positive, and we have always have successful relocations with them. I do not hesitate at all to recommend entering into a partnership with them for relocation services. They are very knowledgeable, and don't mind educating both employees and the company to best practices, and most important provide top notch services to the employees who are moving and make them feel secure in the process.

Sincerely,

A handwritten signature in cursive script that reads "Sandi Smith".

Sandi Smith

Corporate Human Resources Generalist



November 8, 2016

To Whom It May Concern:

Annie Hamilton and the Century 21 Scheetz team have provided relocation services for Delta Faucet Company for approximately two years. Annie and her team have gone way above and beyond my expectations in order to make our new employees and their families feel welcome, both to Delta and the Indianapolis area. The most important thing is Annie does everything with a smile on her face and a style that puts people at ease.

Not only has she provided spent countless hours showing our employees around to learn more about the area, helping them find housing, school districts and navigating the complexities of relocation, she has provided outstanding assistance for international employees that are new to the United States. She works with them to secure banking, social security numbers, transportation and many other things that these employees need and I just simply do not have the capacity to do. She even spends much of her "off hours" time showing our employees the cultural aspects of the community so they can become acclimated more quickly to central Indiana.

I know when I call Annie, our new employees will be in extremely good hands. In addition, I know she will check in with me to let me know if there are issues of which I need to be aware. Relocation is a challenging time for new employees; Annie and her team are a great resource to help them get their career off to a great start. I would be happy to provide any other information you may need regarding my experience working with Annie and her team.

Sincerely,

A handwritten signature in dark ink, appearing to read "Jill Luczkowski".

Jill Luczkowski
Human Resource Manager
Delta Faucet Company
317-587-1269
jll1@deltafaucet.com